

System for operating objects - replaces staff work on afternoon and night shifts
 The installation cost is paid back after 2 - 3 months.

How does the hotel automatic reception work?

The receptionist puts room keys or cards into the boxes before finishing work, which are prepared for rent.

He programs a PIN code for each locker, which will also open the building door.

If the guest reserves a room via the Internet, he sends the code by email or SMS.

It is also possible to install the remote access function.

The receptionist can call from another computer or mobile phone with the reception computer to:

- block or change the PIN code or a lost key chain (card)
- check if the guest came to the hotel, opened the door and the safe.

The system is intended for hotels in which there are mounted:

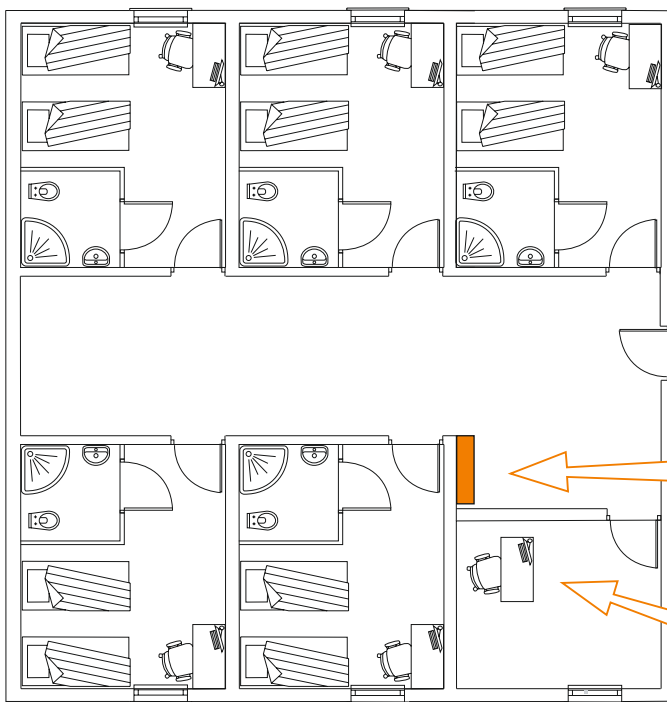
- key locks
- card locks - battery mounted on the door leaf.

You do not need to lay cables in the building or modify the door to the rooms because the lockers are mounted only at the entrance door.

The system can be installed in any hotel - also one with e.g. 200 rooms.

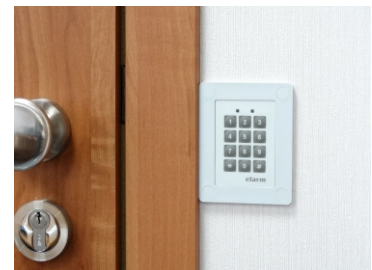
The keys (cards) for rooms prepared for rent at night or afternoon are left in 8 boxes while the reception is not working.

The keys to all rooms should have key chains attached in such a hotel so that guests can open the building's door when the reception is closed.



at the front door is mounted keyboard with key fob and proximity card reader

the door should have fitted electric lock or jumper (electromagnet)



key boxes or battery lock cards

Hotel_S program installed on the reception computer

allows you to program PIN codes different for each reservation



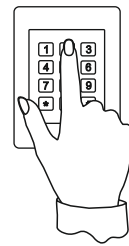
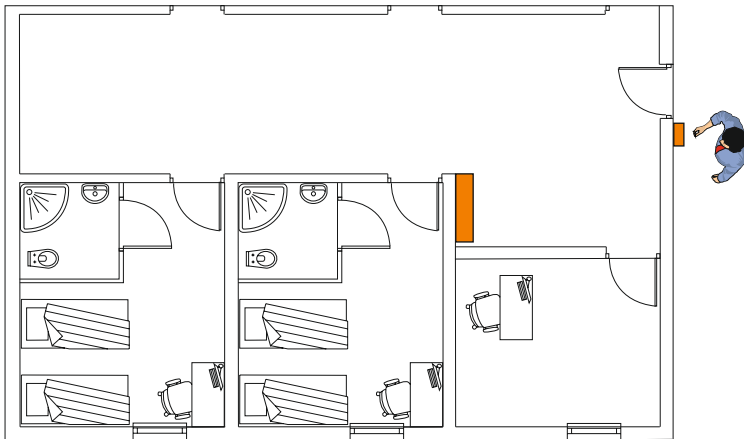
proximity key rings they open the cache and building door

Warning:

Caches should be installed inside the building.

If they are outside, someone will remove the key, open the door and steal it the insurer may refuse to pay compensation as there will be no signs of burglary and the door has been opened with the original key.

The guest comes to the hotel - opens the front door of the building

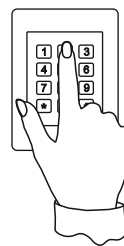
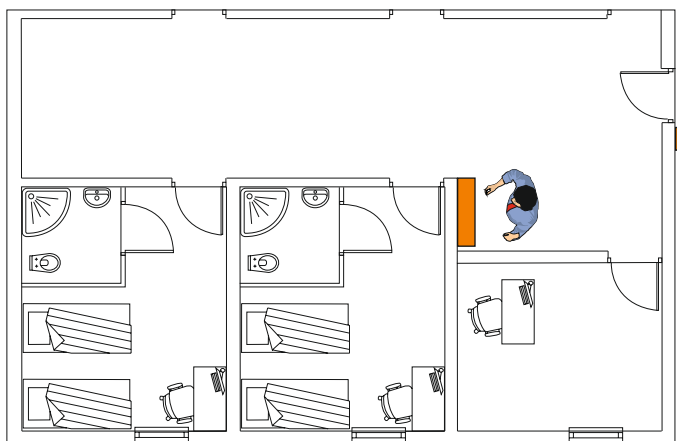


the guest opens the door
received PIN code

e.g. 8024 and the # sign

in case of a mistake it should
be press *

Takes a key to the rented room or a contactless card for battery locks from the locker



the same PIN code presses
on a keyboard with lockers

the red diode lights up
indicating the cache from which
you need to download the key
or card contactless battery locks

each PIN opens a different box



Hotel stay:

during the stay guests can open
building door with a key ring closeup,
card or PIN



End of stay:

the guest should leave the key (card)
in a room or a safe